

ROTARY PAPER TRIMMER

Use the double gauge to easily cut paper in half.

Paper Trimmer



Point ▶ 1

Gauge system enables effortless center cuts

When adjusting the gauge from one side of the trimmer, the other side moves simultaneously. By automatically maintaining equal space on either side of the blade, the trimmer can continuously make clean and easy center cuts.



The double gauge simply holds the paper from both ends.

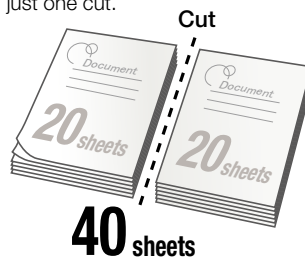


Able to halve A2 size paper into A3. (PK-813)

Point ▶ 2

Cut 20 sheets of PPC forms at a time

Prepare 40 half sheets of paper with just one cut.



40 sheets

Point ▶ 3

Cut paper into rectangles

The parallel moving gauge makes it easy to cut one side of the paper into rectangles.

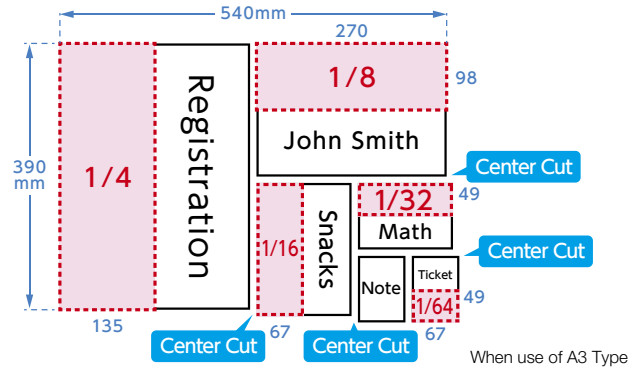


The gauge keeps the paper firmly aligned.

Point ▶ 4

Capable of cutting larger paper sizes (up to A2)

Easily cuts into half sheet of paper in various size.



Point ▶ 5

Cut laminated paper

Able to cut laminated paper up to 0.4mm thick.



Point ▶ 6

Safe and easy blade replacement

Built-in storage for an extra blade.



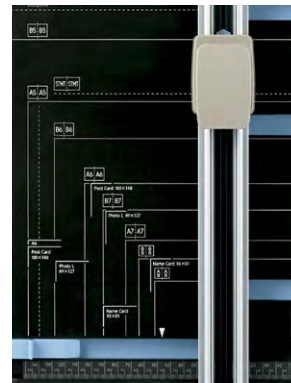
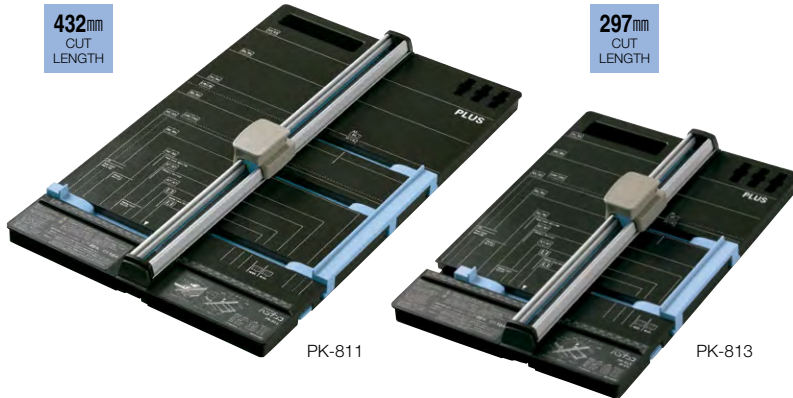
No need to touch the blade.



Slots on the trimmer base store spare blades.

ROTARY PAPER TRIMMER

Dimensions : A3/W329×D547×H81mm, A4/W277×D412×H81mm
 Trimming capacity : Up to 1.8mm thick (approximate 20 PPC Paper 68g/m²)
 Materials : Main Body = ABS, Rail = aluminum, Blade = steel, polycarbonate
 Accessory Parts : 1 Straight blade, 1 Cutting mat



Scale is shown in both mm and paper sizes.



Convenient handle improves the portability of the trimmer.

SPARE BLADE

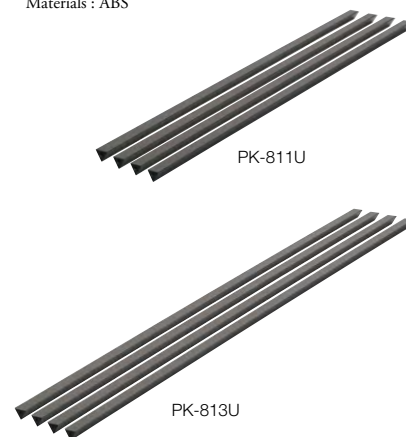
Dimensions : W39×D20×H36mm, Weight : 15g
 Materials : Blade = Steel, Blade Cover = PC



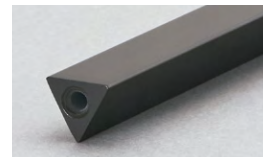
* Scoring and Perforating Capacity: 3 sheets at a time.

REPLACEMENT PART

Dimensions : A3/W508×D9×H8mm
 A4/W373×D9×H8mm
 Materials : ABS



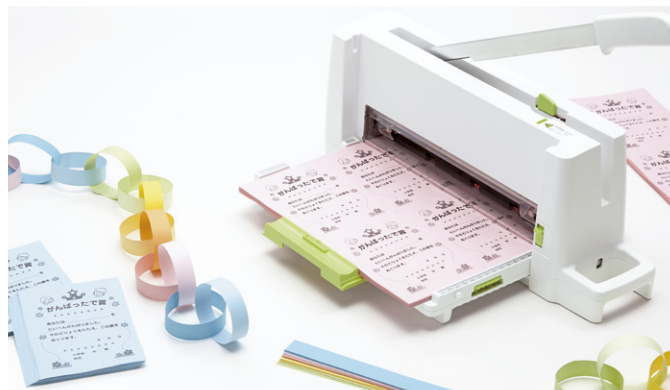
Insert a replacement part.



As the blade damages the insert, it can be rotated regularly to extend the amount of time before having to replace it.

COMPACT PAPER TRIMMER

Safe and functional, the compact body takes up less space.



Point ▶1

Easy to operate with one hand

PLUS's original power assist mechanism & newly designed sharp blade enable the trimming of 60 sheets of paper (64g/m²) in just one cut.



Point ▶2

Designed for safety

The safety covers prevent fingers from reaching into the machine. Your fingers will not touch the blade during blade replacement.



Front



Back



Pulling out the old blade



Putting on the new blade

Point ▶4

Paper holding mechanism for clean edge

When lowering the handle, the trimmer automatically holds down the paper, resulting in a clean finish. No need to hold the paper with your hand.



Point ▶5

Light and compact

Comes with a foldable tray for easy storage, and a handle for carrying. About the same size as a keyboard.



Point ▶3

Cut A3, B4, A4 into half size

Comes with shifting guide to adjust A3, B4 paper to half size position, auxiliary guide for positioning A4 paper to half size position.



Point ▶6

Luminous cutting line enables precise cutting

To preserve the battery, the luminous cutting line automatically turns on and off when opening/folding the tray. It can also be switched off manually.



COMPACT PAPER TRIMMER

Dimension : W455xD120xH190mm (W510 including handle, D240 when tray is open) , Color: White
 Trimming capacity : Up to a thickness of 5.5mm (Approximate 60 PPC Paper 64g/m²)
 Trimming Length : Maximum 297mm (long side of A4 size paper)
 Luminous cutting line (LED, approximate 10cm width)
 Materials : Main body = ABS, steel, aluminum Safety Cover = Polycarbonate
 Two AA batteries required for operating luminous cutting line (sold separately)



PK-213

Blade bearer for the Compact Paper Trimmer (set of two)



PK-113U

External Dimensions : W390xD17xH61mm
 Materials : PVC

A set of replacement blades for the Compact Paper Trimmer

Accessory Parts : 1 Replacement Blade, 1 Blade Bearer,
 2 Vinyl Twist Ties, 1 Hexagon Wrench
 Materials : Blade=Steel, Blade Cover=Polypropylene



PK-213H



Blades

* Do not polish or sharpen the blade. When worn out, replace with a new one.